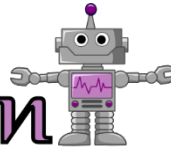


STEM-ersion



Name _____

Date _____

w/ Order of Operations

Caterer

Lucy is creating party packages for her menu. Each package will be priced \$30 less than the cost of the items if the items are ordered separately. Full tray entrees cost \$90, salads cost \$35, and sides cost \$60. Half trays are also available at half the cost.

Lucy hopes to increase sales by offering an extra coupon for one of her three new party packages. She knows that service for less than 50 people is most popular. Help Lucy decide which package to promote. Find the total cost for each package after the \$30 savings are applied.

Package 1 – Serves 55 people	Package 2 – Serves 30 people	Package 3 – Serves 40 people
3 entrees (full tray)	4 entrees (half tray)	4 entrees (1 full tray; 3 half trays)
2 salads (full tray)	2 salads (half tray)	1 salad (full tray)
3 sides (full tray)	3 sides (half tray)	3 sides (half tray)

Use this space to make any calculations and show work.

Evidence

Interpret the Evidence. What does it mean?

Analysis
of the evidence

Conclusion
or Recommendation